

Retractable anchor

Description:

SECURIFIX® safe anchor is a fall arrester system for securing an area inaccessible to the public where there is a risk of falling.

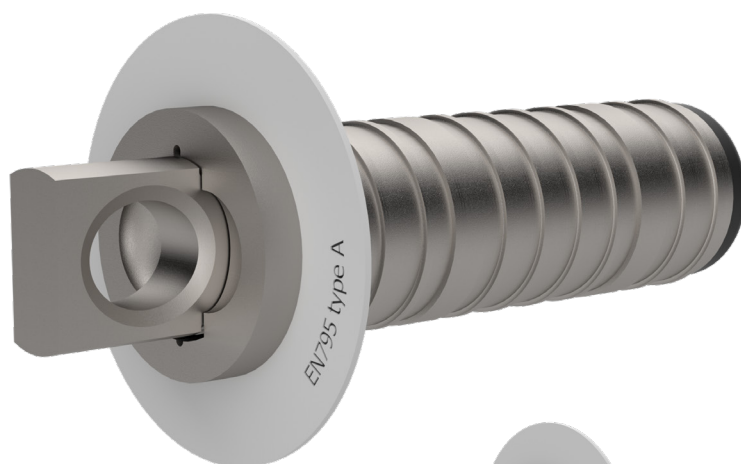
SECURIFIX® safe anchor is used with compliant PPE (lanyard, retractor, etc.). It can be installed on any concrete support.

Details:

Material: Stainless steel

Finish: Raw

Assembly: Delivered with manuals and drawings available online at: <http://extranet.somain.fr>

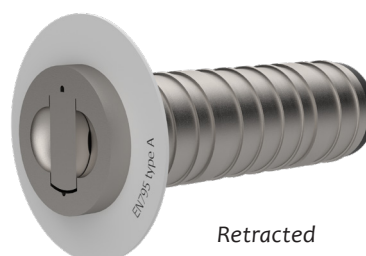


REF : 100212

SECURIFIX® safe anchor

Drilling: Ø30 mm by 110 mm deep.

Fixing: Only chemical seal.



Retracted

✓ Advantages

The **SECURIFIX® safe anchor** is a retractable anchor point with a ring that disappears or appears at the touch of a finger.

i Additional information



REF : 100870

Signage poster: mandatory wearing of PPE, to be installed at each access to the protected zone.

Available, on request, in the language of your choice with the possibility to insert your logo.

