

Lifeline for metal pylon

Description:

SECURIFIL® verticale pylône is a lifeline designed for securing vertical movements on metal masts.

The fixations are specifically adaptable on angles of different sizes and thicknesses used for the manufacturing of masts.

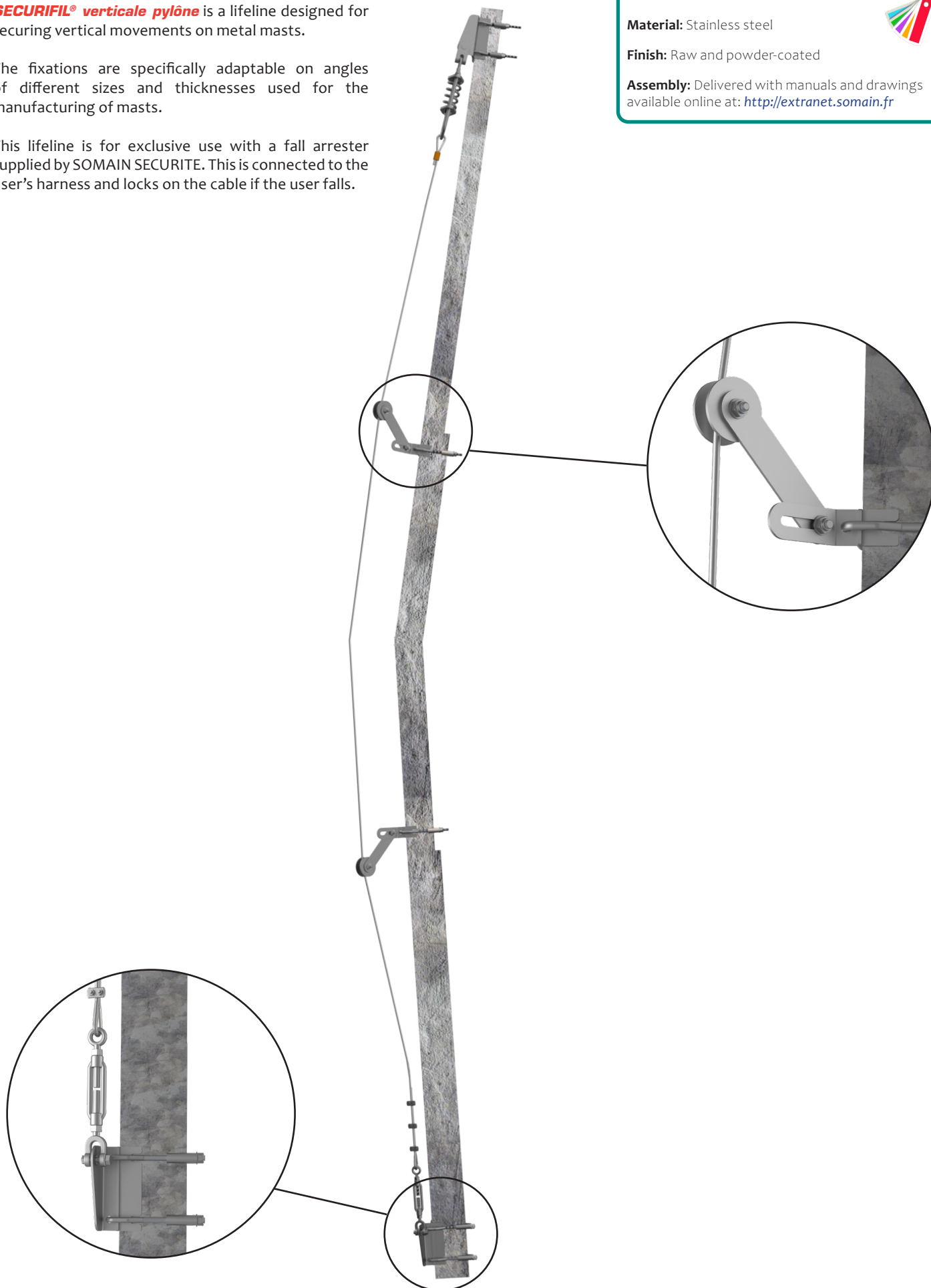
This lifeline is for exclusive use with a fall arrester supplied by SOMAIN SECURITE. This is connected to the user's harness and locks on the cable if the user falls.

Details:

Material: Stainless steel

Finish: Raw and powder-coated

Assembly: Delivered with manuals and drawings available online at: <http://extranet.somain.fr>



+ Elements

These components constitute all **SECURIFIL® pylône** lifelines.



REF : 101935

Bottom and top end in stainless steel painted for mast.



REF : 101957

Stainless steel intermediate with 160 mm extension cable.



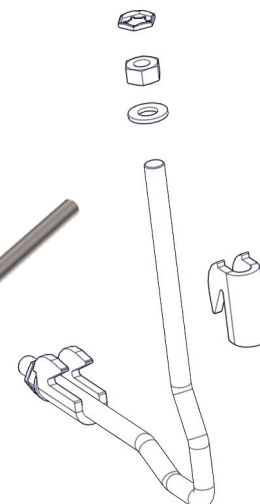
Raw stainless steel bracket

REF : 101944

For angles from 70 to 119 mm.

REF : 101948

For angles from 180 to 239 mm.



REF : 101946

For angles from 120 to 179 mm.

REF : 101950

For angles from 240 to 319 mm.



Stainless steel painted
clamping plate for
angles

REF : 101952

Thickness 6 to 11 mm.

REF : 101954

Thickness 12 to 19 mm.

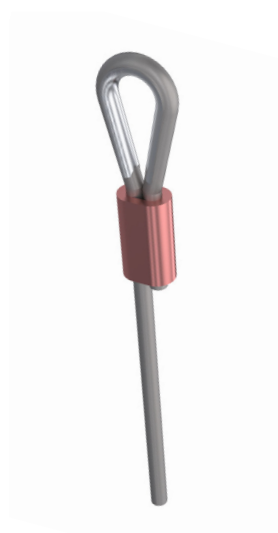
REF : 101956

Thickness 20 to 30 mm.



REF : 100150

Stainless steel cable diameter 8 mm 7 x 19.



REF : 100729

Crimping set + stainless steel
wire thimble.

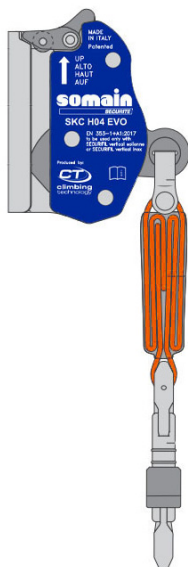


REF : 100481

Stainless steel absorber with
clevis, installed at the upper end,
reduces stress in case of fall.

+ Elements

These components constitute all **SECURIFIL® pylône** lifelines.



REF : 102082

Exclusive mobile fall arrester: SKC H04 EVO

Designed for use on a lifeline **SECURIFIL® verticale pylône** stainless steel cable diameter 8 mm.

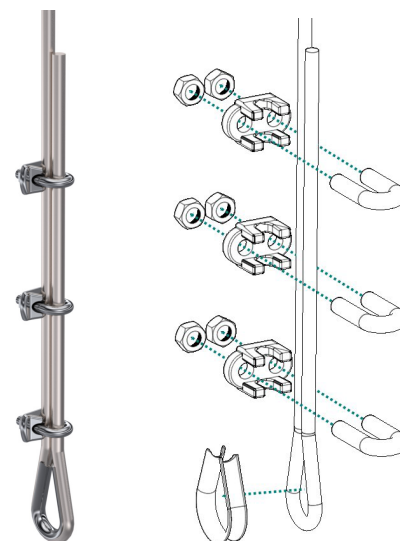
Includes an energy absorber and a triple action and antireversal opening carabiner for more security.

For a user of 50 to 140 kg maximum.



REF : 100155

Tensioner eye/clevis stainless steel compliant with EN 353-1. Installed at the lower end, it allows the adjustment of the cable tension.



REF : 100477

Set of 3 cable clamps and a stainless steel wire thimble compliant with EN 353-1. The jumpers must be installed on the side of the dead strand with a gap of about 4 cm.



REF : 100124

SOMAIN Sealing.

Attaches to tensioner to prevent cable tension from changing. Traceability by unique serial number.



REF : 102122

Mandatory nameplate : wearing of PPE, to be installed at each access to the lifeline.

Available, on request, in the language of your choice with the possibility to insert your logo.



REF : 102128

Raw aluminium post for mandatory nameplate.