

Stainless steel vertical lifeline

Description:

SECURIFIL® verticale inox is a lifeline designed to secure vertical movements. It is suitable for ladders, tubes or angles as well as concrete.

SECURIFIL® verticale inox is for exclusive use with a mobile fall arrester supplier by Somain Securite. This is connected to the user's harness and locks on the cable if the user falls

✓ Advantages

SECURIFIL® verticale inox is guaranteed for 10 years.

Non-deformable, **SECURIFIL® verticale inox** remains operational immediately after a user falls. It ensures the safety of the rescuers and avoids the need to repair the device.

The **SECURIFIL® verticale inox** lifeline can be installed with the appropriate support onto a concrete wall, ladder, angle or square/round tubes.

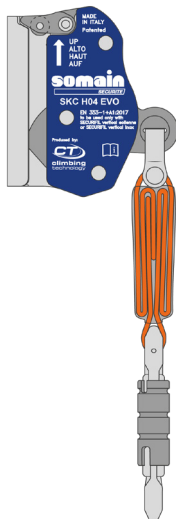
If your case presents specific constraints, our design office will be able to propose an appropriate solution.

⋮ Options

Available with special galvanised or stainless steel supports.

Specific RAL colour on request.

i Additional information



REF : 102082

Exclusive mobile fall arrester: SKC Ho4 EVO

Designed for use on the **SECURIFIL® verticale inox** lifeline 8 mm diameter stainless steel cable. Includes an energy absorber and a triple action and anti-reversal opening system for more security.

For a user of 50 to 140 kg maximum.

Details:

Material: Stainless steel

Finish: Shot-blasted or powder-coated

Assembly: Delivered with manuals and drawings available online at: <http://extranet.somain.fr>

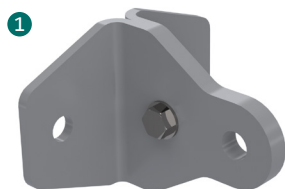


Fixed on concrete

Fixed onto a ladder

+ Elements

These components constitute all **SECURIFIL® verticale inox** lifelines.



REF : 100153

Stainless steel end for concrete support.

Fixing: 2 M12

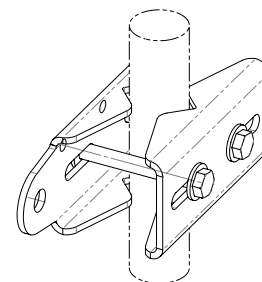
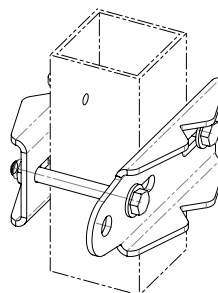
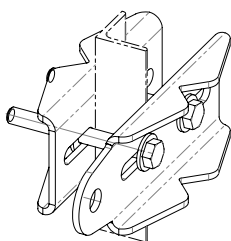


REF : 101187

Stainless steel intermediate for concrete support.

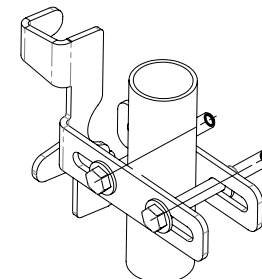
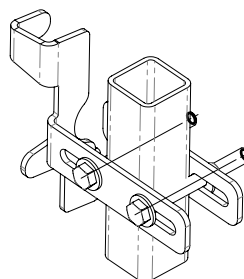
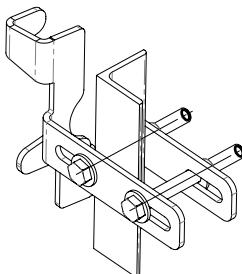
Fixing: 1 M12

To be installed at distances of 8 metres.



REF : 100479

Adjustable stainless steel end (for round tube diameter 60 mm max or square tube section 90 mm max).



REF : 100480

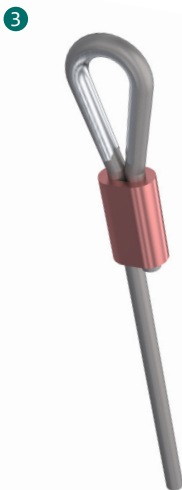
Adjustable stainless steel intermediate. (for round tube diameter 60 mm max or square tube section 90 mm max).
To be installed every 8 metres.

+ Elements

These components constitute all **SECURIFIL® verticale inox** lifelines.



REF : 100150
Stainless steel cable diameter 8 mm 7 x 19.



REF : 100478
Crimping set + stainless steel wire thimble.



REF : 100481
Stainless steel absorber with clevis, installed at the upper end, reduces stress in case of fall.



REF : 100156
Mandatory nameplates : wearing of PPE, to be installed at each access to the lifeline.

Available, on request, in the language of your choice with the possibility to insert your logo.



REF : 102128
Raw aluminium post for mandatory nameplates.

+ Elements

These components constitute all **SECURIFIL® verticale inox** lifelines.

6



REF : 100155

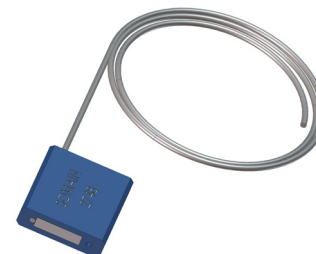
Tensioner eye/clevis stainless steel. Compliant with EN 353-1. Installed at the lower end, it allows the adjustment of the cable tension.

5



REF : 100477

Set of 3 cable clamps and a stainless steel wire thimble. Compliant with EN 353-1. The jumpers must be installed on the side of the dead strand with a gap of about 4 cm.



REF : 100124

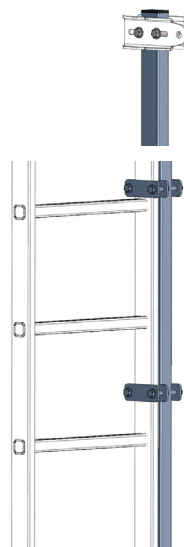
SOMAIN Sealing. Attaches to tensioner to prevent cable tension from changing. Traceability by unique serial number.

+ Additional elements



REF : 100482

Zinc-plated counterweight compliant with EN 353-2. It is used in place of the bottom end and tensioner kit.



REF : 101541

Extension mast to be clamped on ladder. Fixed on a ladder stile.

