

Stainless steel lifeline

Description:

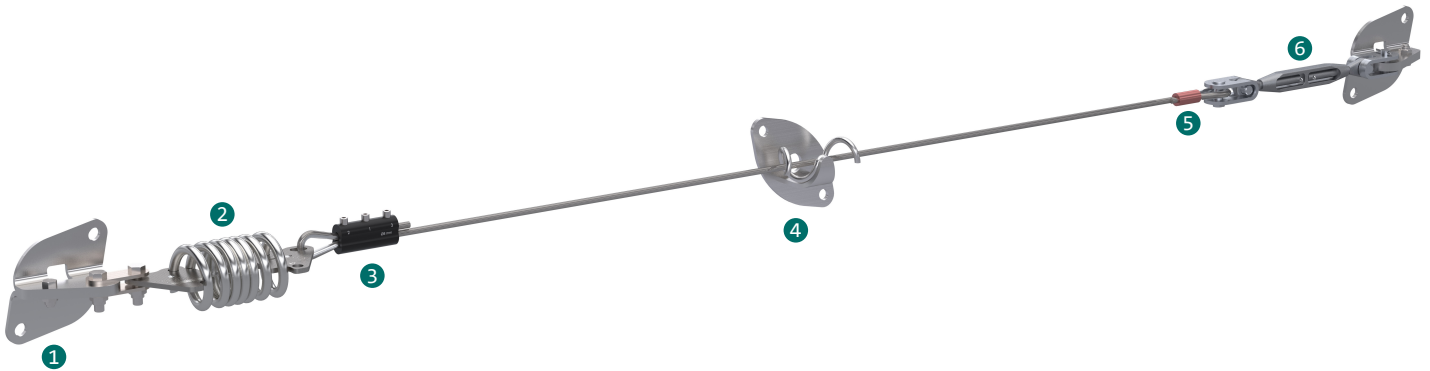
SECURIFIL® inox V3 is installed when enough collective protection cannot be arranged for work at height; is thus the perfect solution to proceed in complete safety.

Details:

Material: Stainless steel

Finish: Electropoli

Assembly: Delivered with manuals and drawings available online at: <http://extranet.somain.fr>



✓ Advantages

- **Competitiveness :**
We were able to lighten the interface supports (posts, plates, fasteners, etc...) thanks to **SECURIFIL® inox V3** significantly reducing stress in case of a fall.
- **Quality:**
The absorber is made of 316 stainless steel. It is guaranteed for 10 years against corrosion (excluding special environments)
- **Traceability:**
SECURIFIL® inox V3 has a unique serial number placed on its components.
- **Simplicity :**
SECURIFIL® inox V3 can be used without a trolley or special slider (cost optimisation).
- **Adaptability:**
SECURIFIL® inox V3 can be installed on all types of supports and roofs.
- **Centre-to-centre distance**
SECURIFIL® inox V3 can be installed with a centre distance of 15m between two intermediates. For distances greater than 15 m, choose the **SECURIFIL® renforcée**.
- **Users**
SECURIFIL® inox V3 supports up to 4 users.

In the event of specific constraints, our design office is able to offer you the appropriate solution.

In accordance with the standard, a software program for calculating forces is available on our extranet (extranet.somain.fr).

⋮ Options

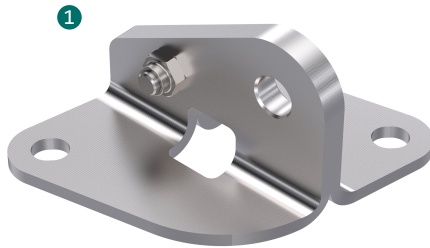
Available with galvanised or stainless steel support.

Specific RAL colour on request (standard: RAL 7038).

Our design office is at your disposal to offer you tailor-made solutions for each situation.

+ Elements

These components constitute all **SECURIFIL® inox V3** lifelines.



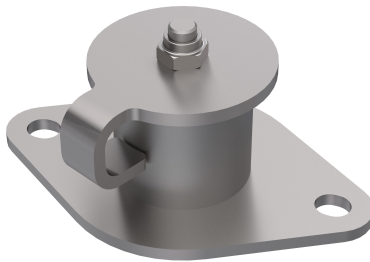
REF : 102239

V2 adjustable stainless steel end.
Centre-to-centre distance: 2 holes 100 mm
Fixing: M10 or M12



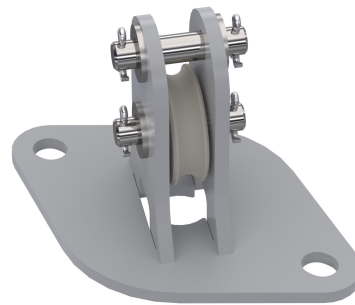
REF : 102270

V2 inox intermediate part.
Every 15 metres maximum.
Centre-to-centre distance: 2 holes 141 mm.
Fixing: M10 or M12



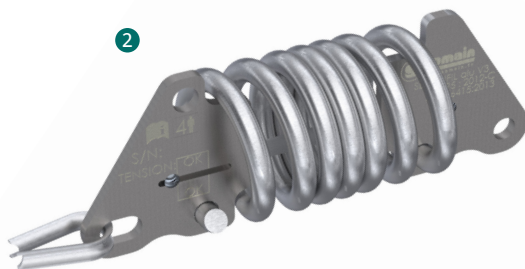
REF : 102320

V2 adjustable stainless steel angular gearbox.
Every 15 metres maximum.
Centre-to-centre distance: 2 holes 100 mm
Fixing: M10 or M12



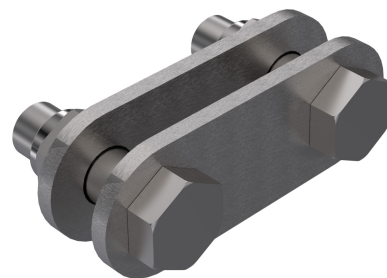
REF : 102188

v2 inox pulley.
Every 15 metres maximum.
2 holes.
Centre-to-centre distance: 141 mm
Fixing: M10 or M12



REF : 102173

Aluminium/stainless steel eye shock absorber, installed at one end of the lifeline, reduces stress on the structure in case of a fall.
Traceability by unique serial number.
Equipped with a tension and fall indicator.



REF : 102286

Armature/end connection kit

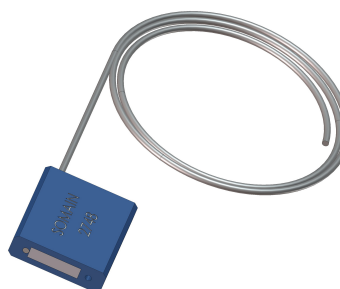
+ Elements

These components constitute all **SECURIFIL® inox V3** lifelines.



REF : 102282

Stainless steel clevis/clevis tensioner, allows adjusting the tension of the lifeline during installation.



REF : 100124

SOMAIN Plumbing. Attaches to tensioner to prevent cable tension from changing. Traceability by unique serial number.



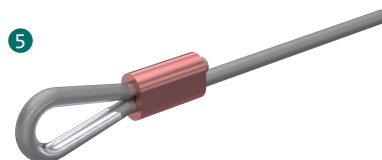
REF : 100150

Stainless steel cable diameter 8 mm 7x19.



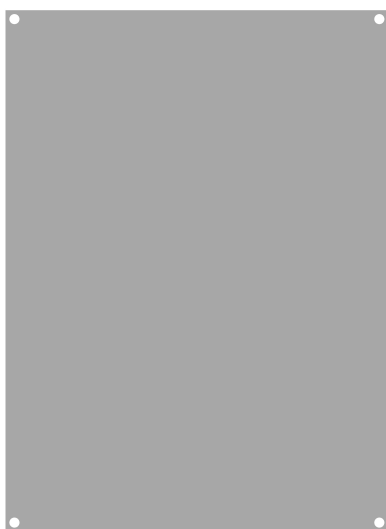
REF : 102131

Aluminium cable clamp kit, diameter 8 mm + 1 stainless steel wire thimble diam. 8 mm.



REF : 100478

Crimping set for stainless steel cable + stainless steel wire thimble 8 mm diameter.



REF : 102128

Raw aluminium post for mandatory poster stickers.



REF : 100886

Signage poster: mandatory wearing of PPE, to be installed at each access to the lifeline.

Available, on request, in the language of your choice with the possibility to insert your logo.