

Lifeline for industrial structures

Description:

SECURIFIL® Industrie is a flexible horizontal belay support especially adapted to industrial structures (steel beams, bridge cranes, corrosive environments, etc.).

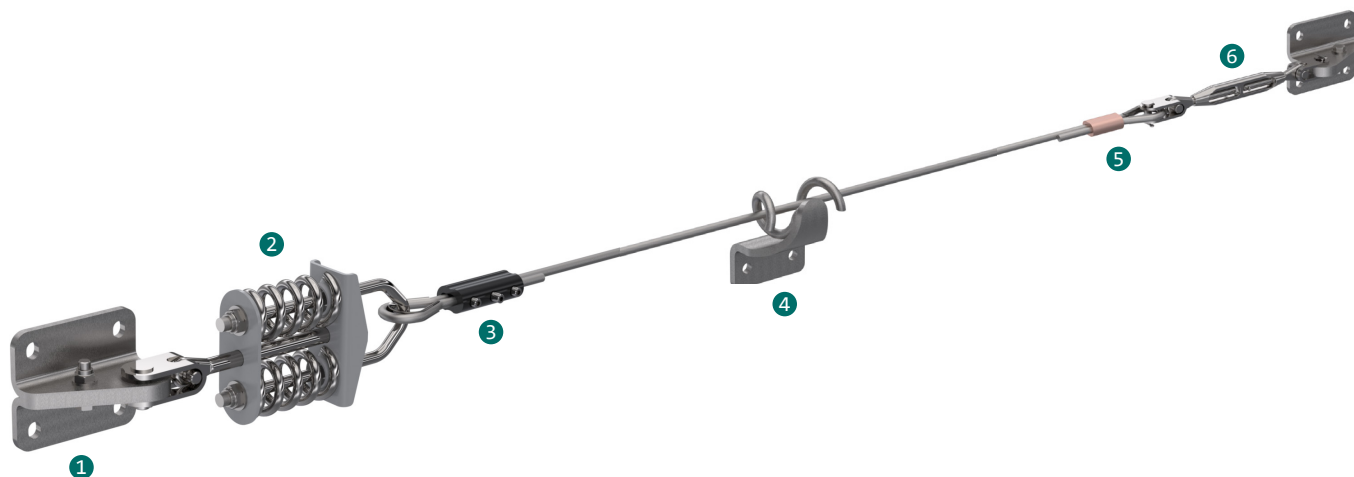
When it is not possible to install a collective protection for your work at height, the lifeline is the appropriate solution to work in complete safety.

Details:

Material: 304L or 316L stainless steel

Finish: Raw or powder-coated

Assembly: Delivered with manuals and drawings available online at: <http://extranet.somain.fr>



✓ Advantages

SECURIFIL® industrie is guaranteed for 10 years.

SECURIFIL® industrie is used with a simple EN 362 compliant connector, no special trolley or slider are required.

SECURIFIL® industrie can be installed on all types of supports and roofs. In the event of specific constraints, our design office is able to offer you the appropriate solution.

100% made of stainless steel parts, **SECURIFIL® industrie** is corrosion resistant. For this reason, this lifeline is chosen for aggressive environments such as landfills, saline environments, and the food industry (depending on the 304L or 316L version).

The design and materials used in the manufacture of the **SECURIFIL® industrie** increase its resistance to mechanical shocks that may occur in an industrial environment.

The **SECURIFIL® industrie** fixing parts can be bolted or welded directly to metal structures.

- **Centre-to-centre distance:**
SECURIFIL® industrie can be installed with a centre distance of 15m between two intermediates. For distances greater than 15 m, choose the **SECURIFIL® renforcée**.
- **Users**
SECURIFIL® industrie supports up to 3 users.

In compliance with the standard, a calculation software is available on our extranet (extranet.somain.fr)

⋮ Options

Available in 316L stainless steel.

Specific RAL colour on request.

Our design office is at your disposal to offer you tailor-made solutions for each situation.

+ Elements

All **SECURIFIL® industrie** lifelines consist of these elements.



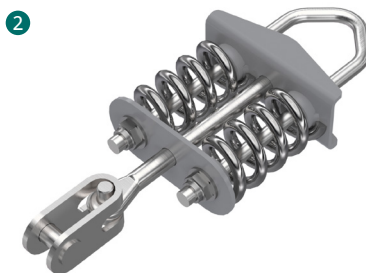
REF : 100145

Stainless steel end part 4 holes

Fixing: M12 or by welding on metal structure

Adaptable on metal structure, concrete support, special support of our supply.

Spacing: 100 x 80 mm



REF : 100476

Stainless steel energy absorber with clevis, installed at one end of the lifeline, reduces stress in case of fall.



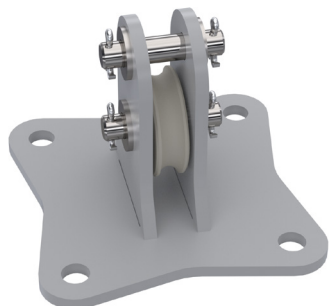
REF : 100148

Stainless steel intermediate, positioned every 15 meters maximum

Fixing: M12 or by welding on metal structure.

Adaptable on metal structure, concrete support, special support of our supply.

Spacing: 72 mm

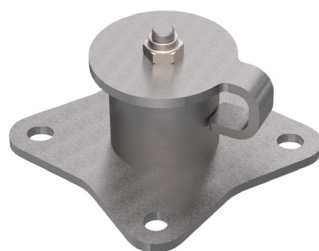


REF : 102188

Intermediate pulley for vertical angle. 4 holes.

Centre-to-centre distance: 100 mm

Fixing: M10 or M12



REF : 102320

V2 adjustable stainless steel angular part. Every 15 metres maximum.

Centre-to-centre distance: 4 holes 100 mm

Fixing: M10 or M12



REF : 100149

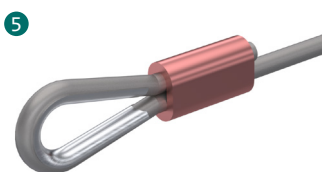
Stainless steel clevis/clevis tensioner, allows adjusting the tension of the lifeline during installation.



REF : 102132

Aluminium cable clamp kit, diameter 10 mm.

+ 1 stainless steel wire thimble diam. 10



REF : 100452

Crimping set for stainless steel cable diameter 10 mm.

Factory-assembled, it joins the cable with the absorber.



REF : 101822

Set: Clamping nut + stainless steel wire thimble. Diameter 8mm.

Captive screws.

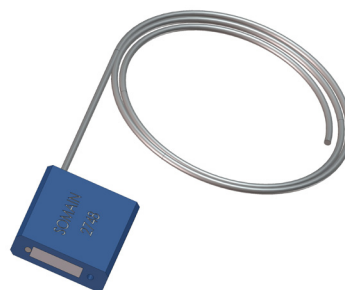
+ Elements

All **SECURIFIL® industrie** lifelines consist of these elements.



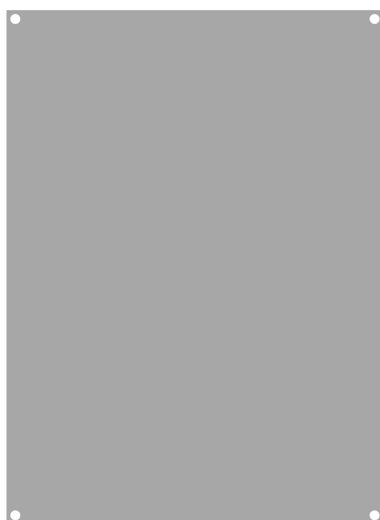
REF : 100118

Stainless steel cable.
Diameter 10 mm 7 x 19.



REF : 100124

SOMAIN Sealing.
Attaches to tensioner to prevent cable
tension from changing.
Traceability by unique serial number.



REF : 102128

Raw aluminium post for mandatory
nameplates.

LIFELINE / LIGNE DE VIE SECURIFIL®		Instructions / Notice
Location : Localisation : Type : Serial number : 00000 Year of manufacture : 2020 Numéro de série : Année de fabrication : Fall Clearance : Transfert d'usage : Date of the first use : Date de mise en service :		 securite.somain.fr
Authorized type of PPE : Type d'E.P.I autorisé : E.P.I conforme aux normes Européennes	Number of users : Nombre d'utilisateurs : Standard : Norme : EN 795 Classe C	
Manufacturer / Fabricant SOMAIN SECURITE 21 de Monterrat - BP 13 42501 Le Chambon-Feuillades cedex FRANCE Tel : +33 (0)4 77 40 54 38 Fax : +33 (0)4 77 40 54 41 Email : securite@somain.fr Web : www.somain.fr		
Distributor / Distributeur 		
Installer / Installateur 		
 Personal Protective Equipment OBLIGATORY Equipement de protection individuel OBLIGATOIRE		

REF : 100886

Mandatory Nameplate : wearing of PPE, to
be installed at each access to the lifeline.

Available, on request, in the language of
your choice with the possibility to insert
your logo.