

## Aluminium lifeline

### Description:

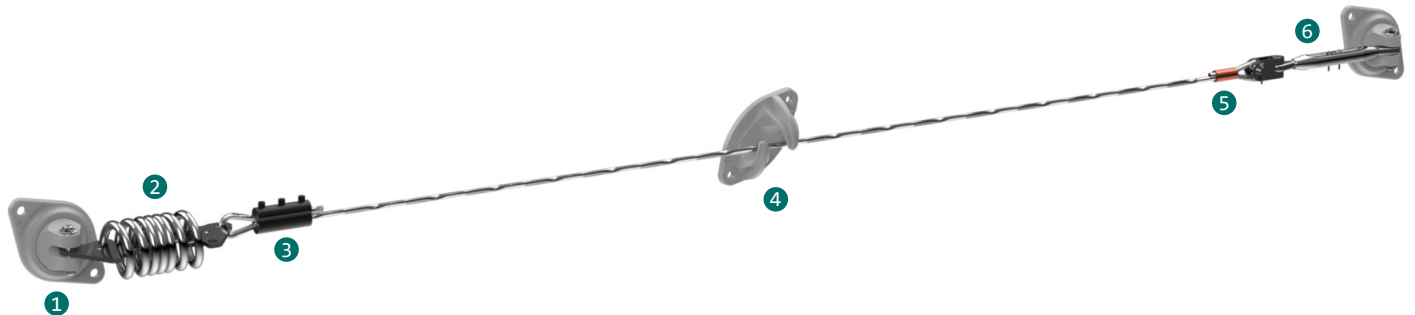
**SECURIFIL® alu V3** is installed when it is not possible to set up sufficient collective protection for work carried out high up, the lifeline is the appropriate solution to work in complete safety.

### Details:

**Material:** Stainless steel/aluminium

**Finish:** Electro-polished stainless steel and powder-coated aluminium

**Assembly:** Delivered with manuals and drawings available online at: <http://extranet.somain.fr>



### ✓ Advantages

- **Competitiveness**  
We were able to lighten the interface supports (posts, plates, fasteners, etc...) because the **SECURIFIL® alu V3** significantly reduces stress in case of a fall.
- **Quality**  
The absorber is made of 316 stainless steel. It is guaranteed for 10 years against corrosion (excluding special environments)
- **Traceability**  
**SECURIFIL® alu V3** has a unique serial number placed on its components.
- **Simplicity**  
**SECURIFIL® alu V3** can be used without a special trolley or slider (cost optimisation).
- **Adaptability**  
**SECURIFIL® alu V3** can be installed on all types of supports and roofs.
- **Centre-to-centre distance**  
**SECURIFIL® alu V3** can be installed with a centre distance of 15m between two intermediates. For distances greater than 15 m, choose the **SECURIFIL® renforcée**.
- **Users**  
**SECURIFIL® alu V3** supports up to 4 users.

In the event of specific constraints, our design office is able to offer you the appropriate solution.

In accordance with the standard, a software program for calculating forces is available on our extranet ([extranet.somain.fr](http://extranet.somain.fr))

### ⋮ Options

Available with galvanised or stainless steel support.

Specific RAL colour on request (standard: RAL 7038).

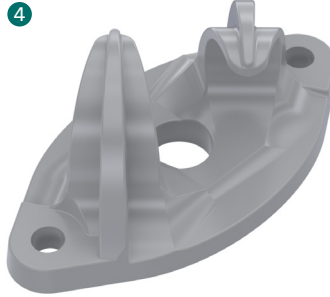
Our design office is at your disposal to offer you tailor-made solutions for each situation.

**+ Elements**

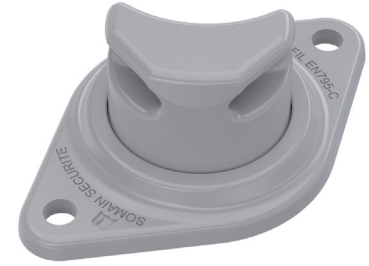
All **SECURIFIL® alu V3** lifelines consist of these elements.



**REF : 102441**  
V2 adjustable aluminium end.  
**Spacing:** 2 holes 141 mm  
**Fixing:** M10 or M12



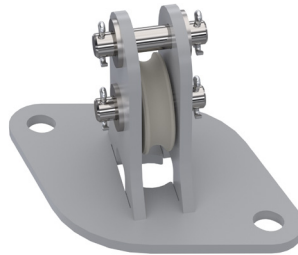
**REF : 101759**  
Alu V2 intermediate part.  
Every 15 metres maximum.  
**Spacing:** 2 holes 141 mm.  
**Fixing:** M10 or M12



**REF : 102442**  
V2 adjustable aluminium angular part.  
Every 15 metres maximum.  
**Spacing:** 2 holes 141 mm  
**Fixing:** M10 or M12



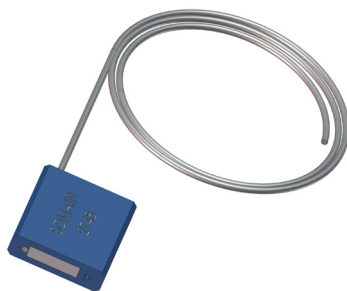
**REF : 102173**  
Aluminium/stainless steel eye shock absorber,  
installed at one end of the lifeline, reduces stress on the structure in case of a fall.  
Traceability by unique serial number.  
Equipped with a tension and fall indicator.



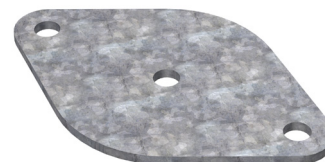
**REF : 102188**  
V2 inox intermediate pulley.  
Every 15 metres maximum.  
2 holes.  
**Centre-to-centre distance:** 141 mm  
**Fixing:** M10 or M12



**REF : 100122**  
Tensioner stainless eye/clevis, allows adjustment of the tension of the lifeline during installation.



**REF : 100124**  
SOMAIN Sealing.  
Attaches to tensioner to prevent cable tension from changing.  
Traceability by unique serial number.



**REF : 102364**  
3-hole plate in galvanized steel for ends / intermediate / angle transmission.  
Indispensable on concrete posts, hot decks and on standing seam supports.

**REF : 102365**  
3-hole stainless steel plate for ends / intermediate / bevel gear.  
Indispensable on concrete posts, hot decks and on standing seam supports.

**+ Elements**

All **SECURIFIL® alu V3** lifelines consist of these elements.



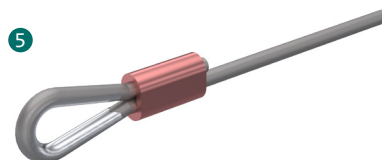
**REF : 100150**

Stainless steel cable diameter 8 mm 7x19.



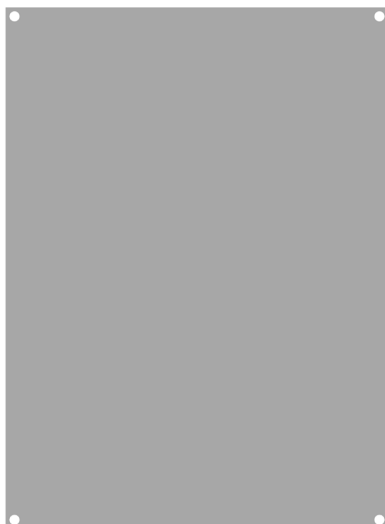
**REF : 102131**

Aluminium cable clamp kit, diameter 8 mm + 1 stainless steel wire thimble diam. 8 mm.



**REF : 100478**

Crimping set for stainless steel cable + stainless steel wire thimble 8 mm diameter.



**REF : 102128**

Raw aluminium post for mandatory nameplate.



**REF : 100886**

Mandatory Nameplate : Wearing of PPE, to be installed at each access to the lifeline.

Available, on request, in the language of your choice with the possibility to insert your logo.