

Element for guardrail

Description:

The components of the **SECURILISSE®** are assembled without welding and very quickly. They allow any type of guardrail configuration to be adapted to the area to be secured.

The moulded aluminium bases are supplied with pre-assembled clamping screws to speed up the assembly process.

Details:

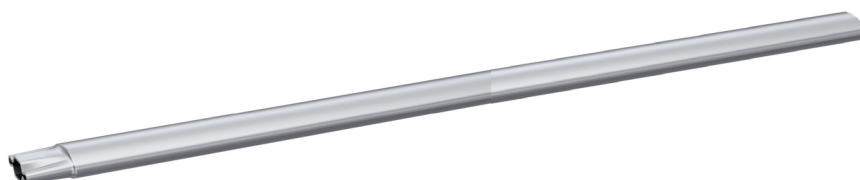
Material: Aluminium

Finish: Raw, anodised or powder-coated

Delivery: Delivered with manuals and drawings available online at: <http://extranet.somain.fr>



Handrail elements



REF : 100529

Oval aluminium handrail 65 x 30 mm, thickness 2.5 mm, length 3 metres + spigot



REF : 101905

Fixing cap for top rail
Fixing with self-tapping screws
4.8 X 32 mm



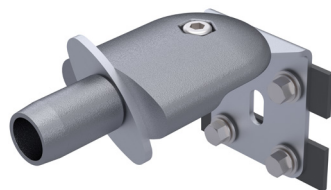
REF : 100531

Vertical angle sleeve for top rails for straight guardrail.



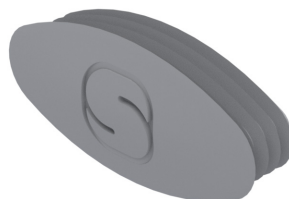
REF : 100538

Articulated angle sleeve for top rail for inclined guardrails.



REF : 102565

Handrail fitting / wall.



REF : 101018

Plastic cap for top rail.



REF : 101453

Expansion joint kit for handrail.



REF : 100275

Handrail upright L-connector.



REF : 100252

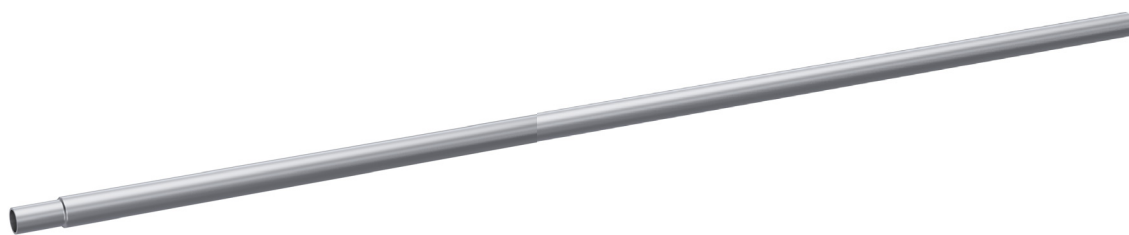
Handrail T-connector.



REF : 100655

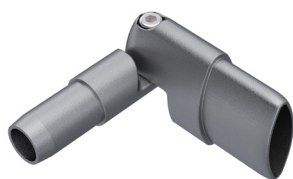
Complete articulated T-connector.

Éléments pour sous-lisse



REF : 100534

Aluminium midrail, Ø 30 mm, length 3 m + spigot



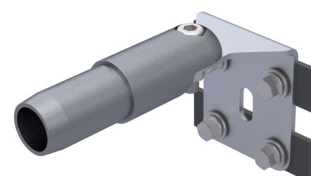
REF : 100862

Handrail-to-midrail connector



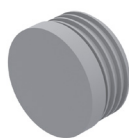
REF : 100535

Angle sleeve, Ø 30 mm for midrails.



REF : 102566

Aluminium midrail-to-wall connector.



REF : 100256

Plastic cap diameter 30mm for midrails.

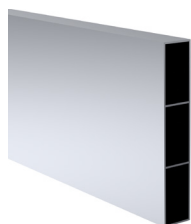


REF : 101452

Expansion joint kit for midrails.

Options

The standard requires the installation of a toeboard when the parapet is less than 100 mm high.



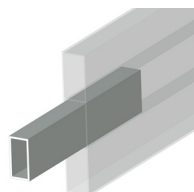
REF : 100258

Aluminium toeboard.
100 X 18 mm.
Length 3m.



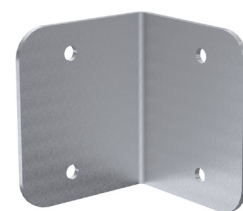
REF : 100556

Plastic cap for toeboard.



REF : 100536

Straight fitting for toeboard.



REF : 100259

Angle fitting for toeboard.