

Under sealing (under the coping cover)

Description:

The **SECURILISSE® evo GCE-RE** is a collective system against falls from heights, designed for roofs that are inaccessible to the public for installation under a coping cover. The base is fixed on the upper face of the parapet, under the coping cover.

+ The base requires only one M12 fastener

Details:

Material: Aluminium

Finish : Raw, anodised or powder-coated

Versions existantes : Straight or inclined

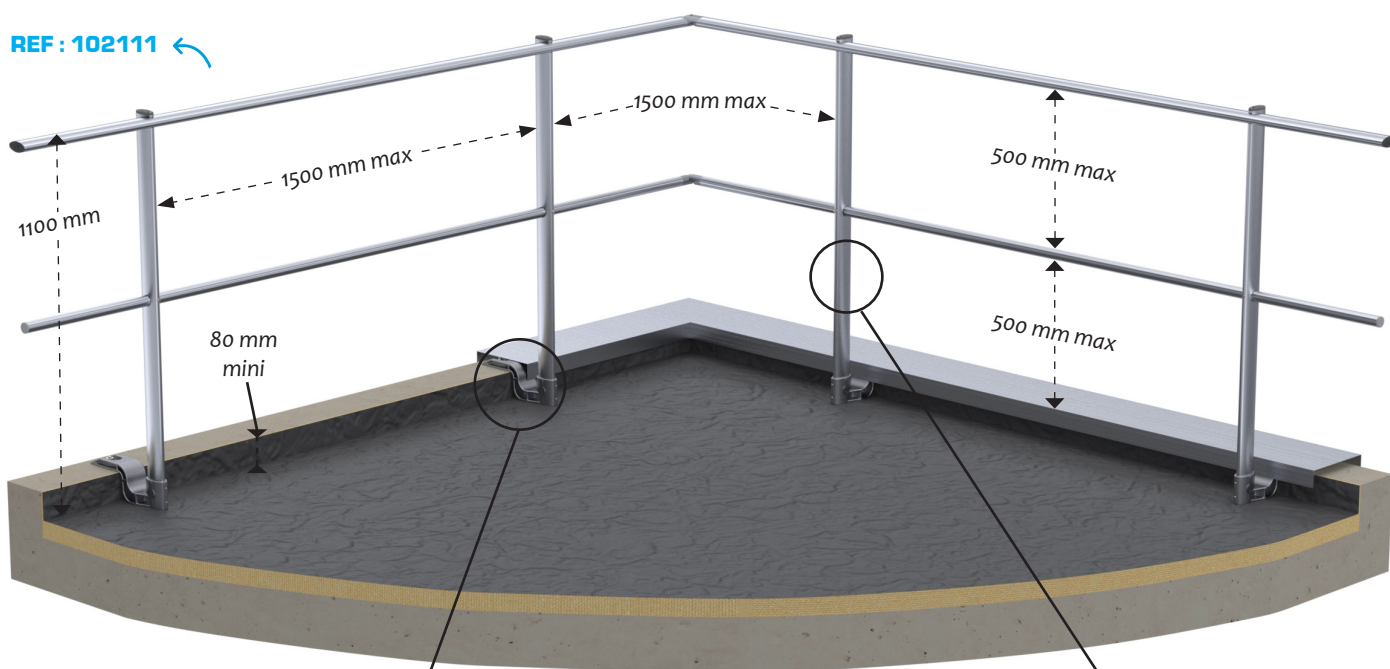
Delivery : Delivered with manuals and drawings available online at: <http://extranet.somain.fr>



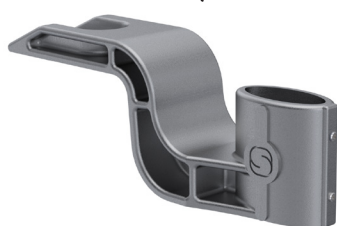
GCE-RE (straight)

1 Straight guardrail with midrail: GCE-RE2

The **SECURILISSE® evo GCE-RE2** is used for mounting on a 100 to 570 mm high parapet with a coping cover.



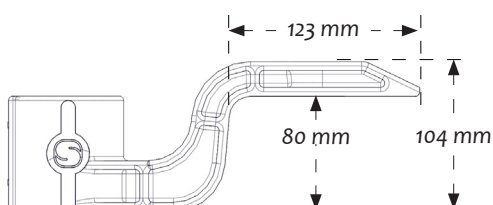
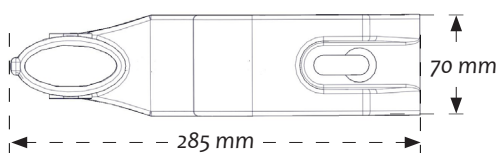
REF : 102111 ←



REF : 100255

Base for fixation under cover coping.

Fixing: 1 M12



REF : 102331

Straight upright with midrail.
 Its length depends on the height of the parapet.

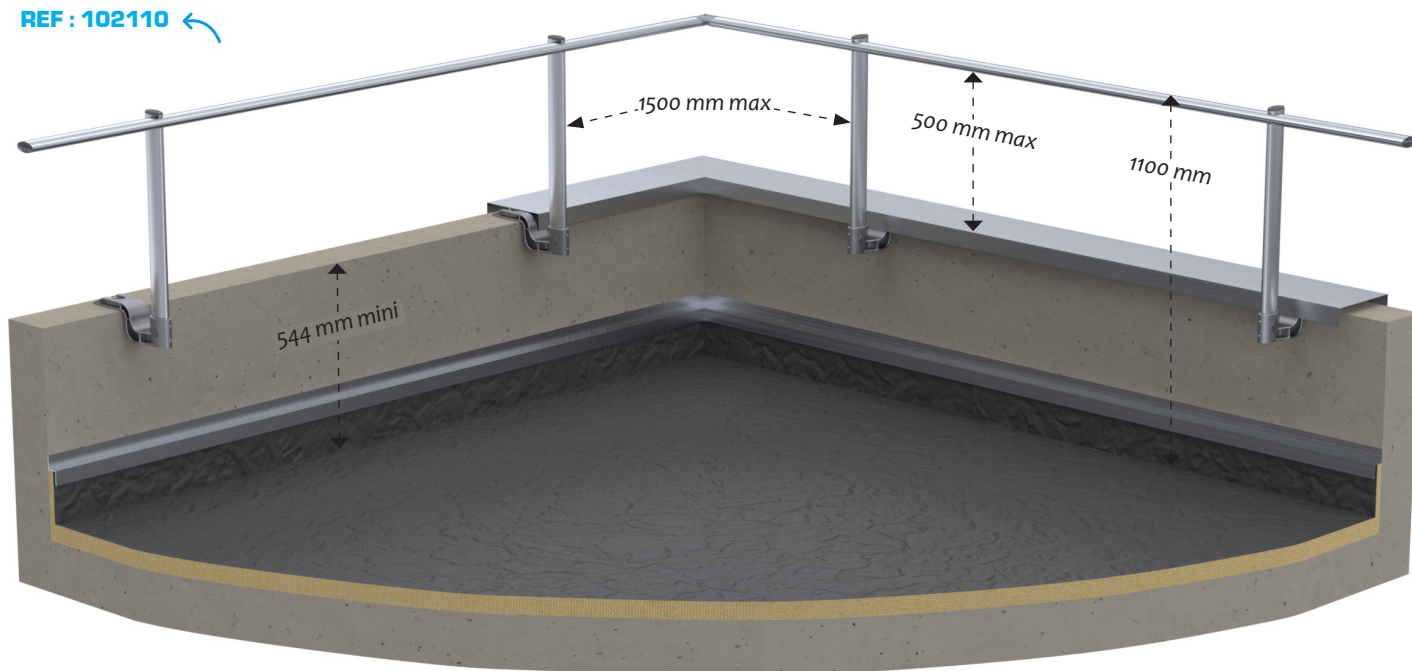
REF : 102329

Straight upright without midrail.
 Its length depends on the height of the parapet (higher than 570mm)..

2 Straight guardrail without midrail: GCE-RE1

The **SECURILISSE® evo GCE-RE1** is used for mounting on a higher than 570 mm parapet with coping cover.

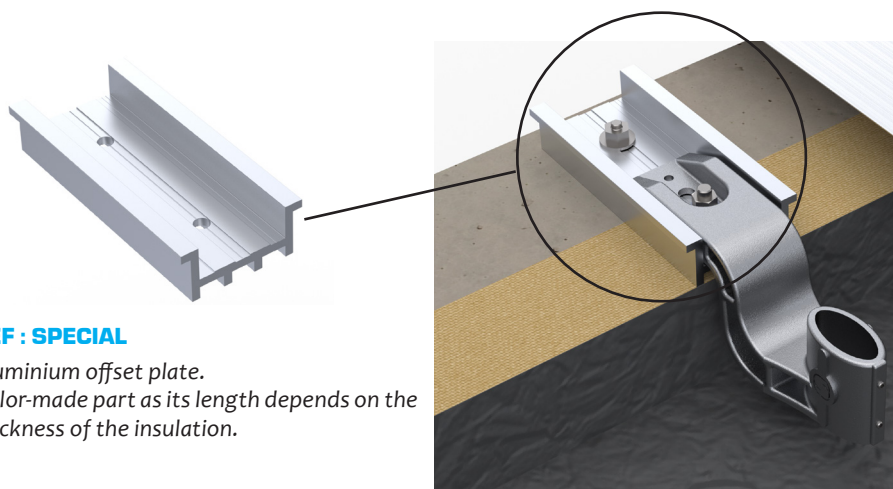
REF : 102110 ←



Offset version of z-shaped guardrail: GCE-RED

The **SECURILISSE® evo GCE-RE1D** and the **GCE-RE2D** are suitable for parapets equipped with an insulation and a coping cover.

The GCE-RE baseplate is bolted to the offset plate. The latter is fixed on the upper face of the parapet, under the coping cover.



REF : SPECIAL

Aluminium offset plate.
Tailor-made part as its length depends on the thickness of the insulation.

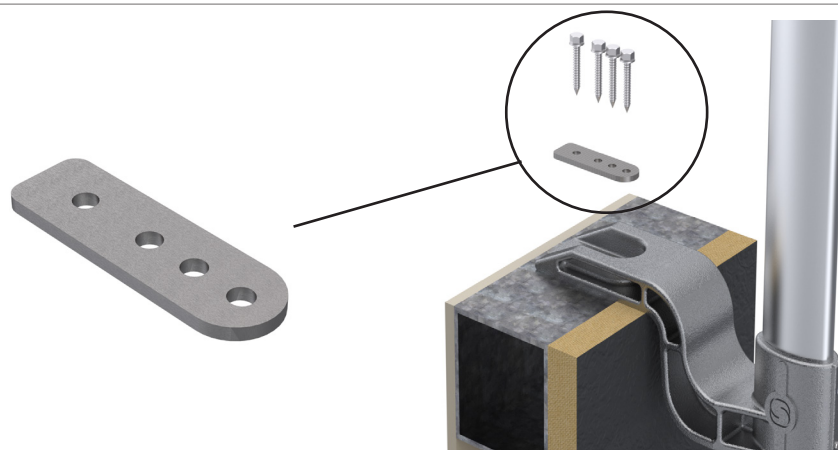
Customised for fixing on metal structures:

The **SECURILISSE® evo GCE-RED1** and the **GCE-RED2** can be easily adapted to metal tubes.

The GCE-RE base is fixed to the metal by 4 self-tapping 6,3X38 screws through a special washer.

REF KIT : 101847

- **REF : 101872**
Adapter washer for metal bracket.
- **REF : 101116**
Self-tapping screw by unit.



Under sealing (under the coping cover)

Description:

The **SECURILISSE® evo GCE-REI** is a collective system against falls from heights, designed for roofs that are inaccessible to the public for installation under a coping cover. The base is fixed on the upper face of the parapet, under the coping cover. The 30-degree inclined version is chosen for aesthetic reasons as it is less visible from the ground.

- + The base requires only one M12 fastener

Details:

Material: Aluminium

Finish: Raw, anodised or powder-coated

Versions existantes: Straight or inclined

Delivery: Delivered with manuals and drawings available online at: <http://extranet.somain.fr>

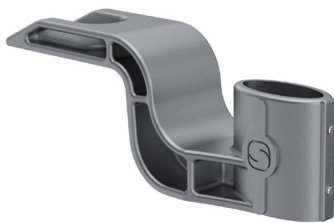
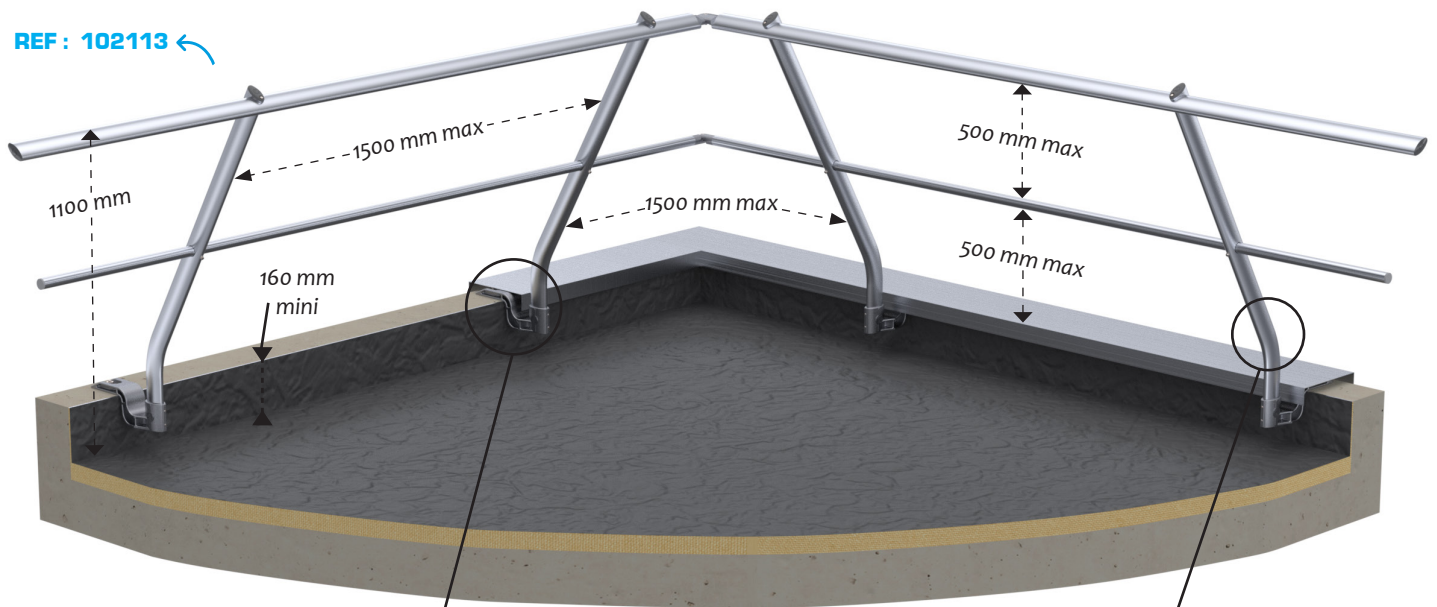


GCE-REI (inclined)

1 Inclined guardrail with midrail: GCE-REI2

The **SECURILISSE® evo GCE-REI2** is used for mounting on a 160 to 630 mm high parapet with coping cover.

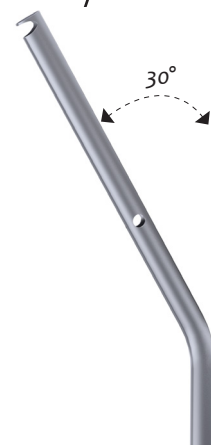
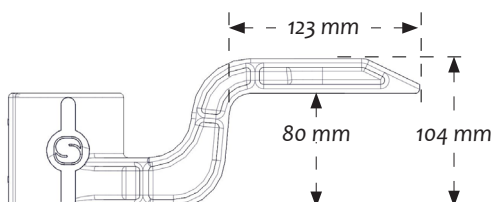
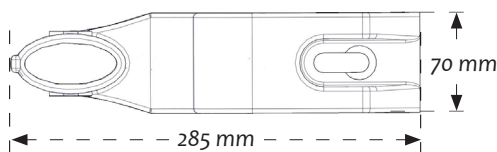
REF : 102113 ←



REF : 100255

Base for fixation under cover.

Fixing: 1 M12



REF : 102332

Inclined upright with midrail. Its length depends on the height of the parapet.

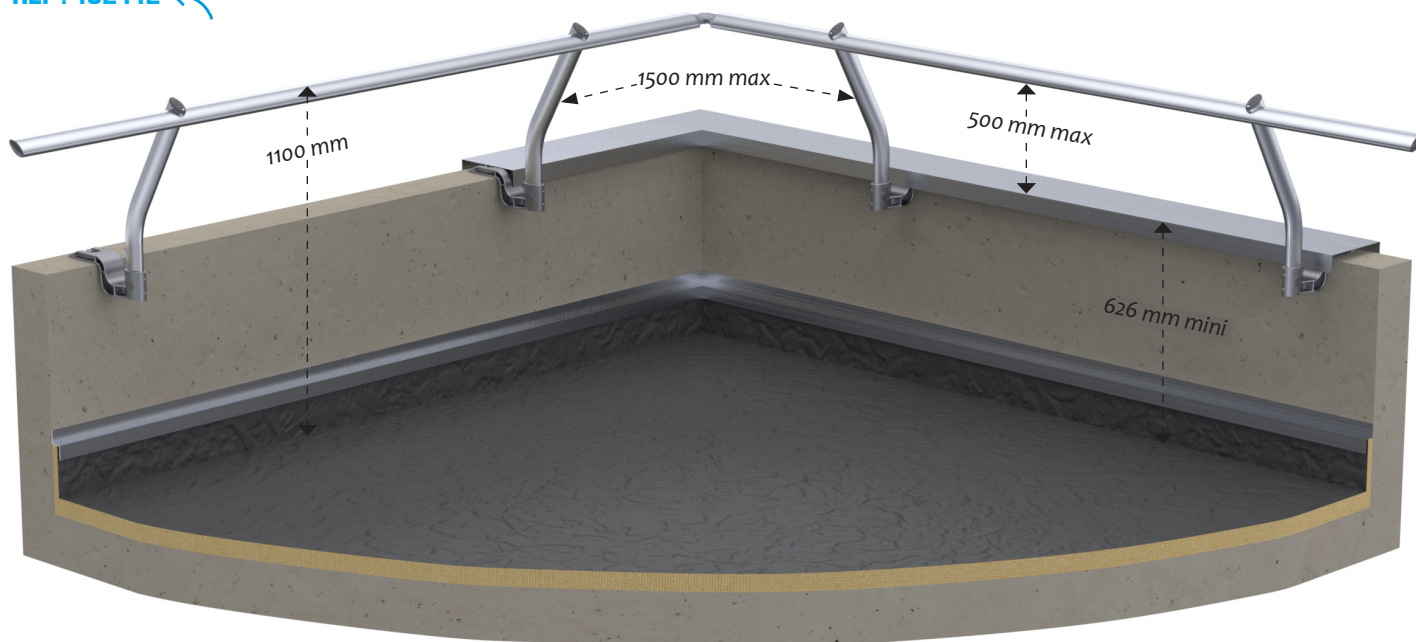
REF : 102330

Inclined upright without midrail. Its length depends on the height of the parapet (higher than 630mm).

2 Inclined guardrail without midrail: GCE-RE1

The **SECURILISSE® evo GCE-RE1** is used for mounting on a parapet higher than 630 mm with a coping cover.

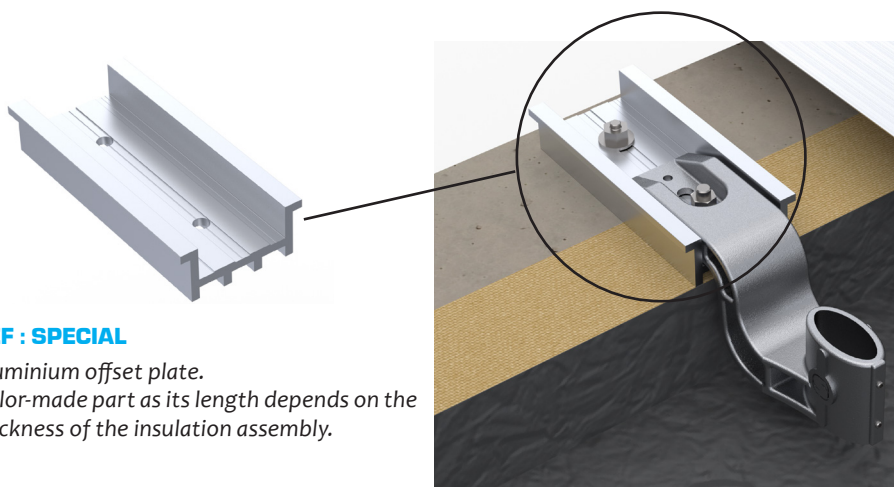
REF : 102112 ←



Offset version of z-shaped guardrail: GCE-RE1

The **SECURILISSE® evo GCE-RE1** and the **GCE-RE2** are suitable for parapets equipped with an insulation and a coping cover.

The GCE-RE baseplate is bolted to the offset plate. The latter is fixed on the upper face of the parapet, under the coping cover.



REF : SPECIAL

Aluminium offset plate.
Tailor-made part as its length depends on the thickness of the insulation assembly.

Customised for fixing on metal structures:

The **SECURILISSE® evo GCE-RE1** and the **GCE-RE2** can be easily adapted to metal tubes.

The GCE-RE base is fixed to the metal by 4 self-tapping 6.3X38 screws through a special washer.

REF KIT : 101847

- **REF : 101872**
Adapter washer for metal bracket.
- **REF : 101116**
Self-tapping screw by unit

