

## Fixing on metal deck

### Description:

The **SECURILISSE® evo GCE-BA** is a collective system against falls from heights, designed for roofs that are inaccessible to the public equipped with a steel deck cover. The supports are fixed parallel or perpendicular to the corrugations in the steel deck (210 mm to 330 mm) by means of self-tapping screws; waterproofing is ensured by a specific sealing strip.

### Details:

**Material:** Aluminium

**Finish :** Raw, anodised or powder-coated

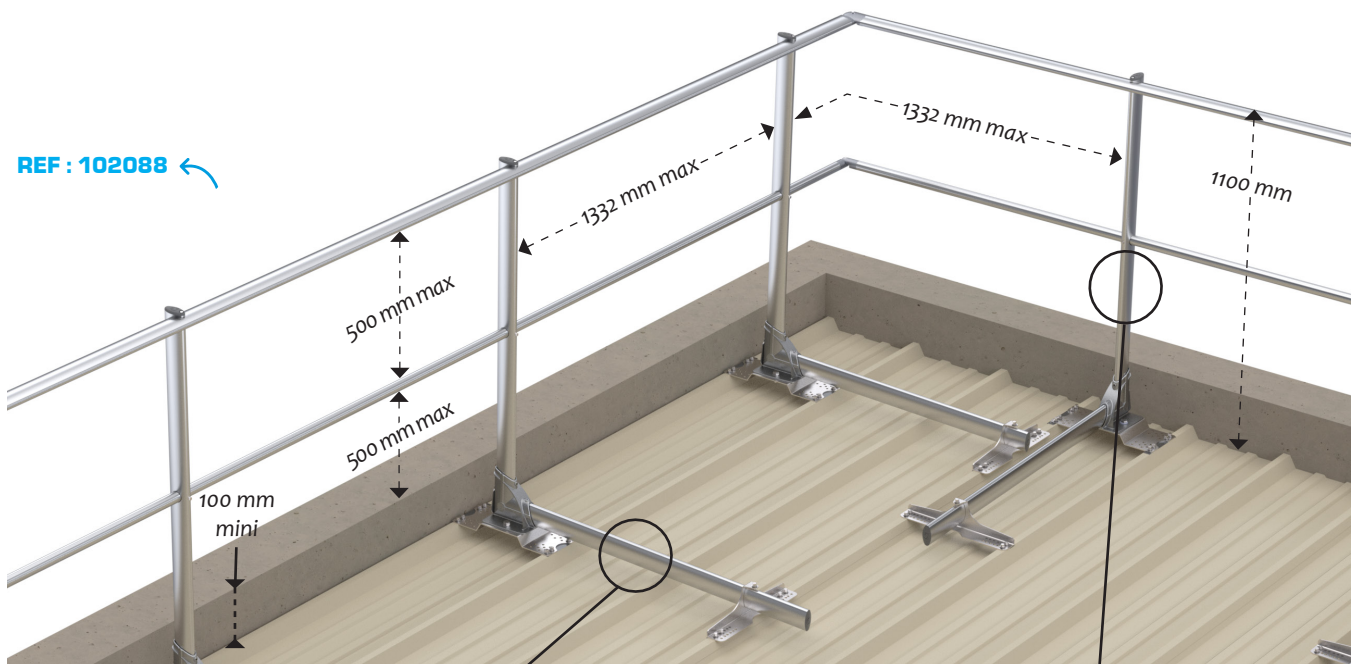
**Versions existantes :** Straight or inclined

**Delivery :** Delivered with manuals and drawings available online at: <http://extranet.somain.fr>



### GCE-BAD (straight)

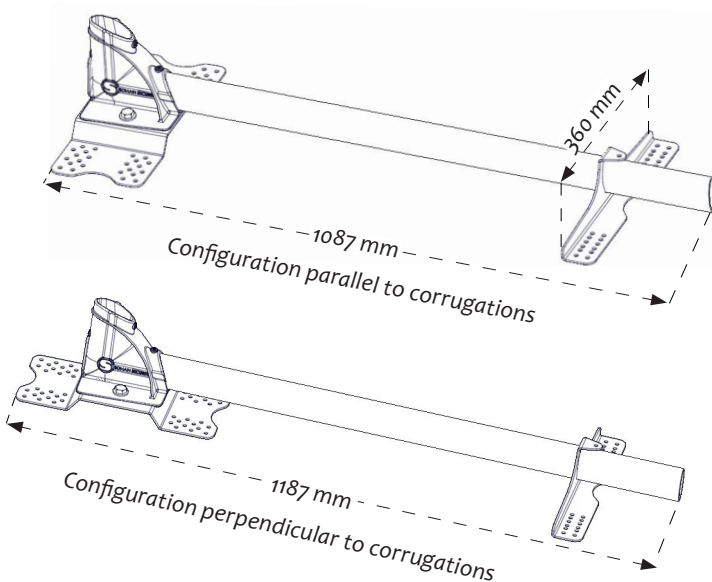
The **SECURILISSE® evo GCE-BAD** is used for an installation on metal deck roofs with min. 100 mm parapet.



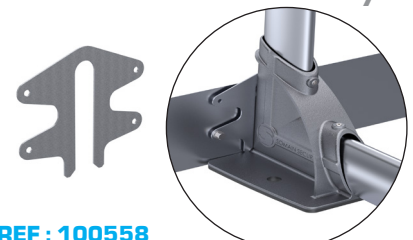
REF : 102088 ←

REF : 100543  
Load strut

REF : 101906  
Straight upright



### Toeboard accessory:



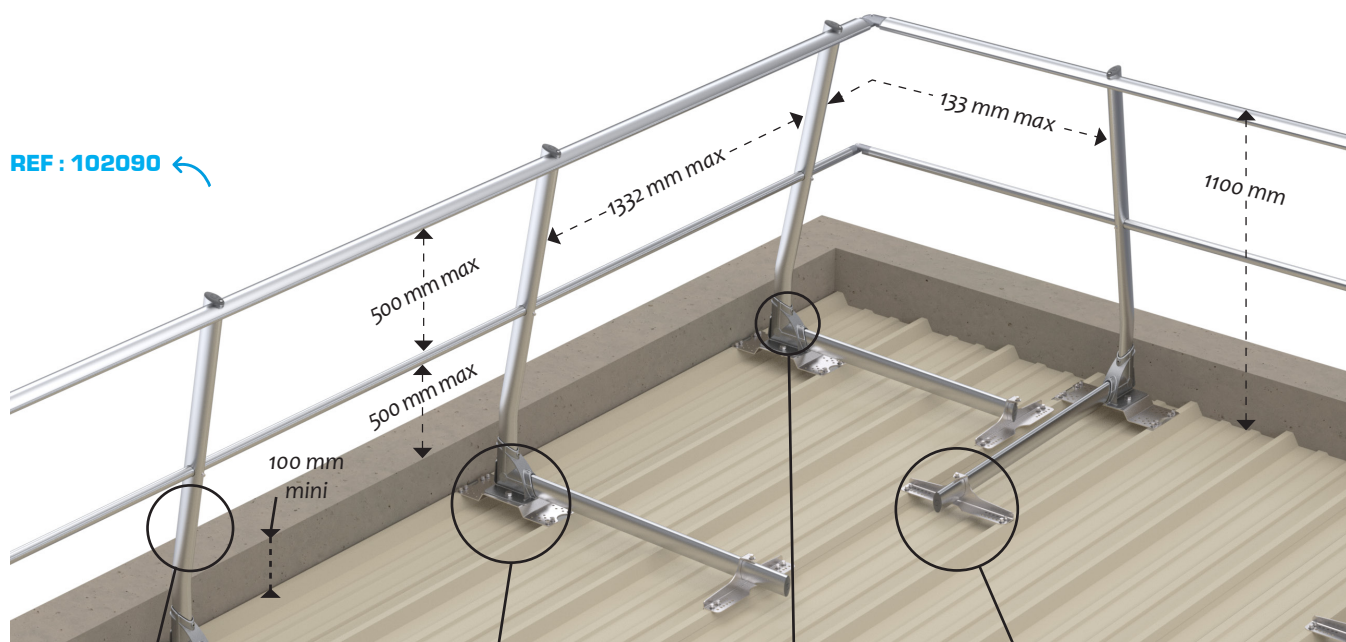
REF : 100558

Toeboard fixation for GCE-BA.  
 With a parapet of less than 100 mm.

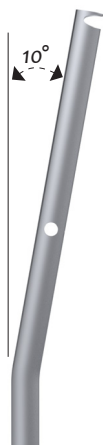
## Fixing on metal deck

### GCE-BAI (inclined)

The 10-degree inclined version is chosen for aesthetic reasons as it is less visible from the ground. It also makes it possible to adjust the slope of the roof.

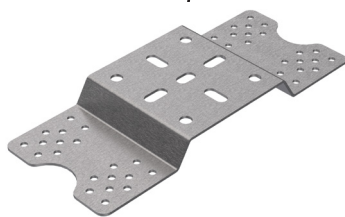


REF: 102090 ←



REF: 102231

10-degree inclined upright



REF: 102215

Stainless steel support for corrugations in steel deck bases 210 to 330 mm.



REF: 100142

Guardrail base without footing. Pre-mounted clamping screws.



REF: 100271

Stainless steel support strut for corrugations in steel decks 210 to 330 mm.

REF: 102219

Zinc-plated support for corrugations in steel decks 210 to 330 mm.

REF: 101551

Zinc-plated strut support for corrugations in steel decks 210 to 330 mm.