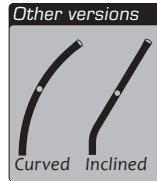


Fixing onto hot metal deck : GC-BC

The **SECURILISSE® GC-BC** is a collective system against falls from heights, designed for roofs that are inaccessible to the public for installation onto hot metal decks through the insulation. The waterproofing is preserved thanks to the combination of two collars fitted to the guardrail uprights.

Quick installation
Preserved waterproofing
No maintenance



Materials: Aluminium

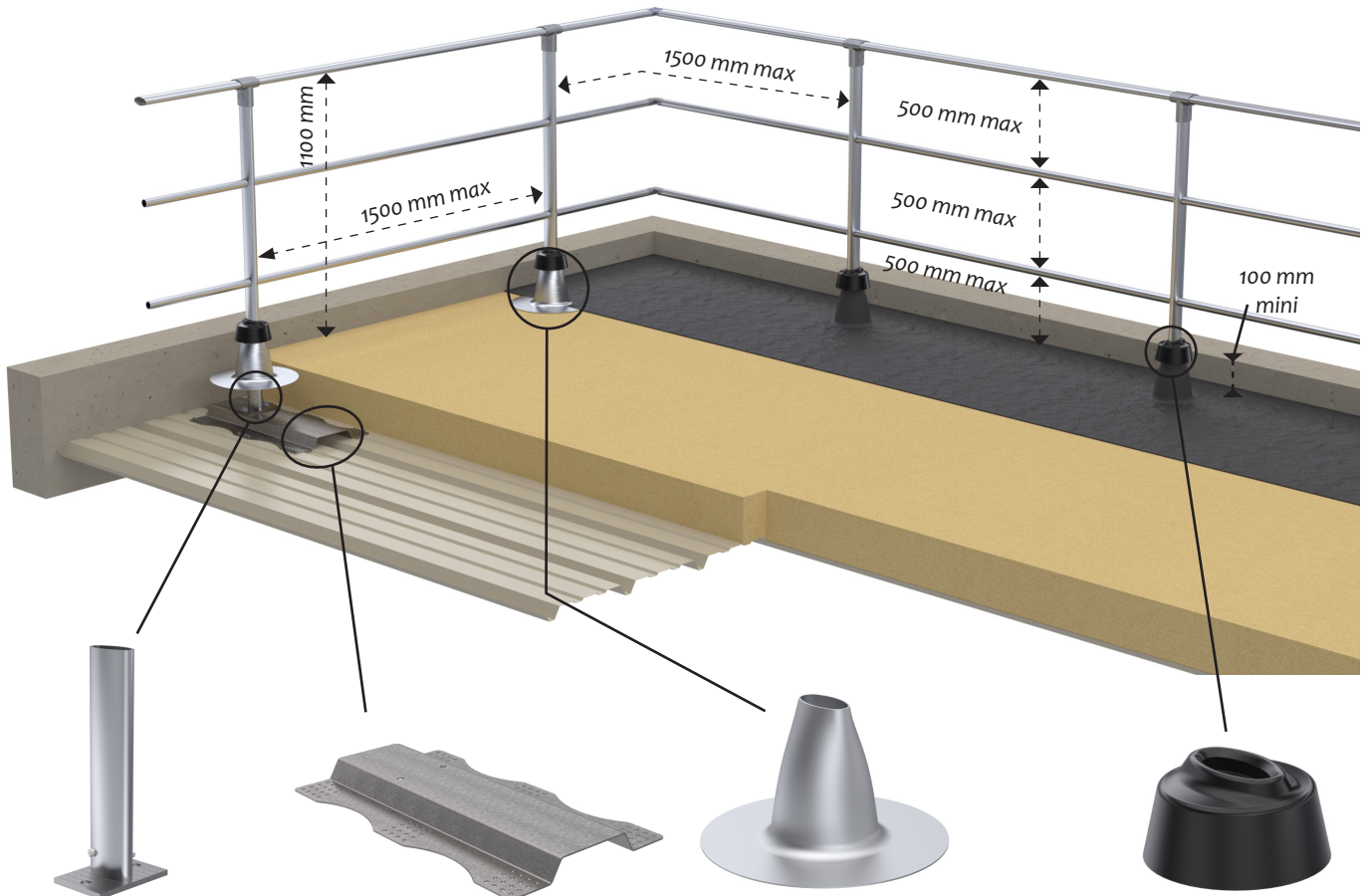
Finish: Raw, anodised or powder-coated

Technique: Delivered with manuals and drawings available online at:
<http://extranet.somain.fr>



Straight guardrail with midrails: GC-BC-D

The **SECURILISSE® GC-BC-D** is used for an installation on roof hot metal decks with min. 100 mm parapets.



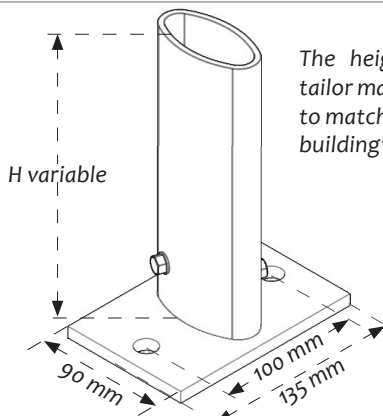
REF: 101232
Customised GC-T1 base.
Fixed with 2 M12.

REF: 101706
Zinc-plated steel plate for steel decks.

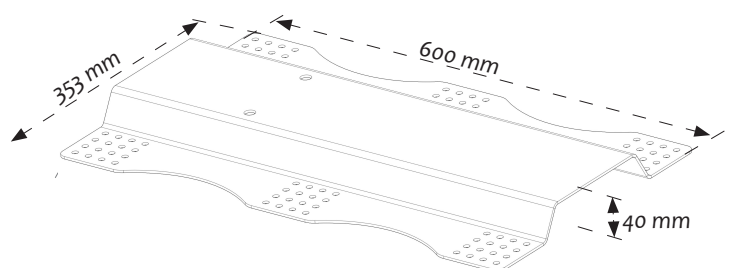
REF: 101082
Aluminium cover collar.

REF: 101019
Plastic collar.

Space requirement:

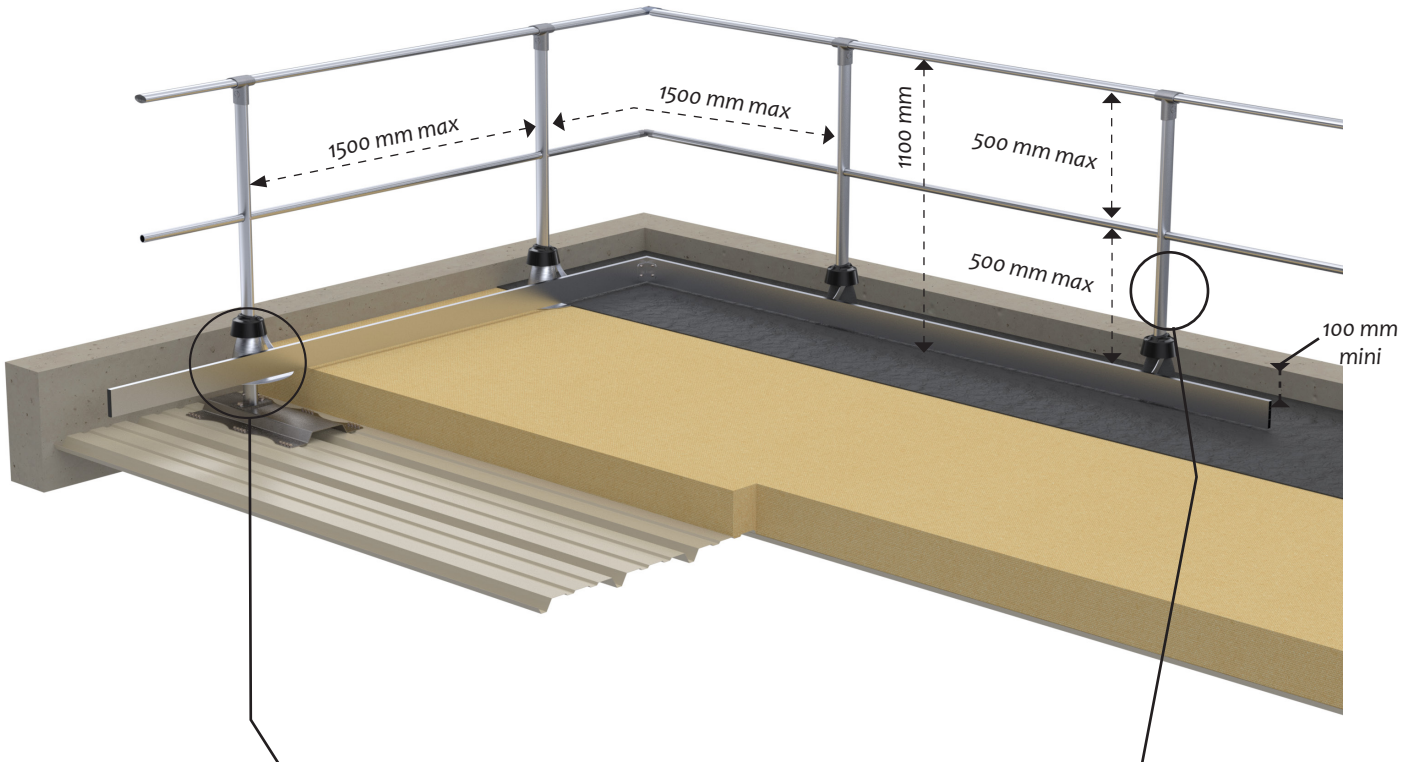


The height of the base is tailor made in our workshops to match the thickness of the building's waterproofing.

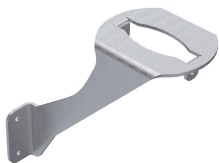
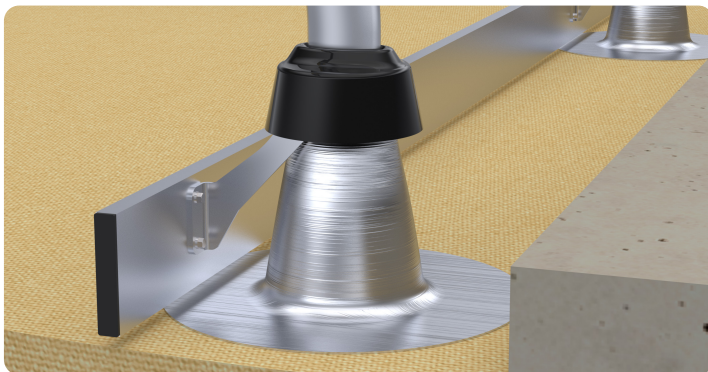


Straight guardrail with midrail and toeboard: GC-BC-D+P

The **SECURILISSE® GC-BC-DP** is suitable for work areas on hot metal deck roofs without parapets or of less than 100 mm. The standard then requires the installation of a toeboard.



Accessoire plinthe :



REF : 101087

Fixation de plinthe pour GC-TI.
Lorsque l'acrotère est inférieur à 100 mm.



REF : 100532

Standard straight upright.